

Zahner Surfaces reflect decades of in-house metallurgical innovation. Our unparalleled experience and understanding of chemical compounds, climatic impacts, and their atmospheric and local conditions have led to superior mechanical, chemical, pre-weathered and patinated finishes that far exceed the performance of paint and other alternatives. In addition to adding artistry and elegance, our chemically engineered processes provide a protective barrier for the underlying metals.

As stewards of the built environment, all Zahner Surfaces processes occur in our award-winning, EPA compliant facility. Zahner is dedicated to maintaining minimal impact on habitats and ensuring the health and safety of employees as well as the community at large.

### **Oscura™**

Oscura is a Zahner blackened patina on steel that has been developed for interior use. Activated steel surfaces create a mottled and artistic ambiance that varies from sheet to sheet. The primary surface is sealed with a clear coat to mitigate rusting due to the effects of the ambient interior environmental.

### **Angel Hair™**

Zahner's Angel Hair is our patented process to etch metal with a fine non-directional grain, resulting in a smooth and uniform light scattering architectural surface.

### **GB-60™**

GB-60 is Zahner's non-directional mechanical finish that diffuses the natural reflectivity of metals by introducing very fine dimples, creating a satin glow.

### **Solanum Steel™**

Solanum is a pre-oxidized weathering steel surface. Our lab accelerates the natural weathering process, advancing the self protecting layer toward the more beautiful mature state that otherwise takes years in the environment. Solanum Steel provides a range of resonant tones on an enduring surface.

### **Dirty Penny™**

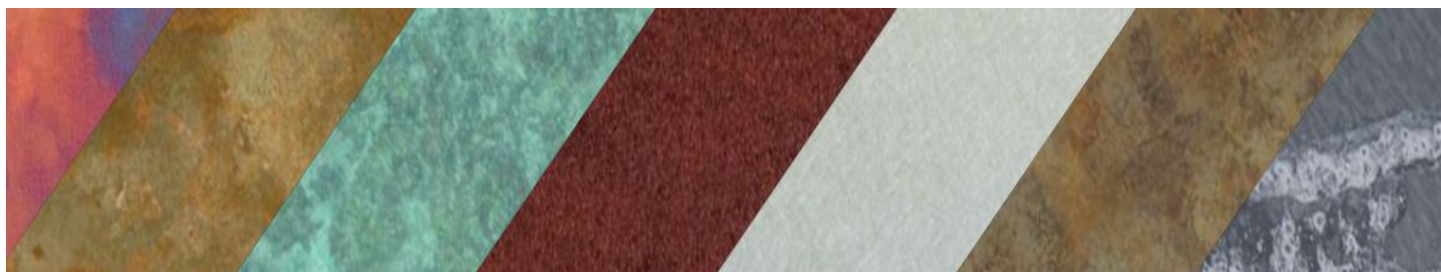
Dirty Penny copper features light and dark tones ranging from blues to greens and reds. An iridescent surface, the material benefits from a microfilm which develops on the exterior layer of the material. The oxidized layer is like a living protecting barrier which grows and evolves as it further oxidizes.

### **Star Blue™**

Star Blue copper is a premium surface which achieves a stunning aged aesthetic, replicating centuries of natural copper weathering. Zahner technicians have mastered a technique to speed up this process to a chemically stable state.

### **Hunter™ | Baroque™ | Roano™**

Hunter, Baroque, and Roano pre-weathered zinc patina offerings age with elegance and integrity. As one of the most enduring metals, zinc surfaces can easily last more than 100 years in non-aggressive environments. Our proprietary zinc patina processes provide a lightweight material with a rich protected surface. Our various zinc patinas can serve both contemporary and historic designs.



The chart below represents Zahner's most popular Surfaces offerings. The typical lead time is 6-8 weeks, with a minimum order quantity of 10 sheets. For additional thickness, width or length options, please contact a Zahner sales representative.

Zahner Surface	Recommended Application	Base Metal (alloy)	Standard Thicknesses	Approx. decimal (mm)	Approx. weight [lbs/ft <sup>2</sup> ]	COTE [in/in/°F]	Standard Sizes
Angel Hair	Interior and Exterior	stainless steel (304 or 316)	14 ga	.0785" (1.99)	3.15	9.6 x 10 <sup>-6</sup>	4' x 8'
GB-60			12 ga 11 ga	.1084" (2.75) .1233" (3.13)	4.41 5.04		4' x 10' 4' x 12' 5' x 8' 5' x 10' 5' x 12'
Dirty Penny	Interior and Exterior	copper	20 oz	.0270" (.686)	1.25	9.8 x 10 <sup>-6</sup>	3' x 8' 3' x 10'
Star Blue			24 oz 32 oz 48 oz	.0323" (.820) .0431" (1.09) .0646" (1.64)	1.50 2.00 3.00		
Oscura	Interior	steel (1008A)	14 ga 12 ga 11 ga	.0747" (1.90)	3.13	7.0 x 10 <sup>-6</sup>	4' x 8' 4' x 10' 4' x 12' 5' x 8' 5' x 10' 5' x 12'
Solanum Steel	Interior and Exterior	weathering steel (A606)		.1046" (2.66) .1196" (3.04)	4.38 5.00		
Hunter	Interior and Exterior	zinc	0.8 mm	.031" (0.8)	1.18	15.4 x 10 <sup>-6</sup>	39.4" x 10'
Baroque							
Roano							